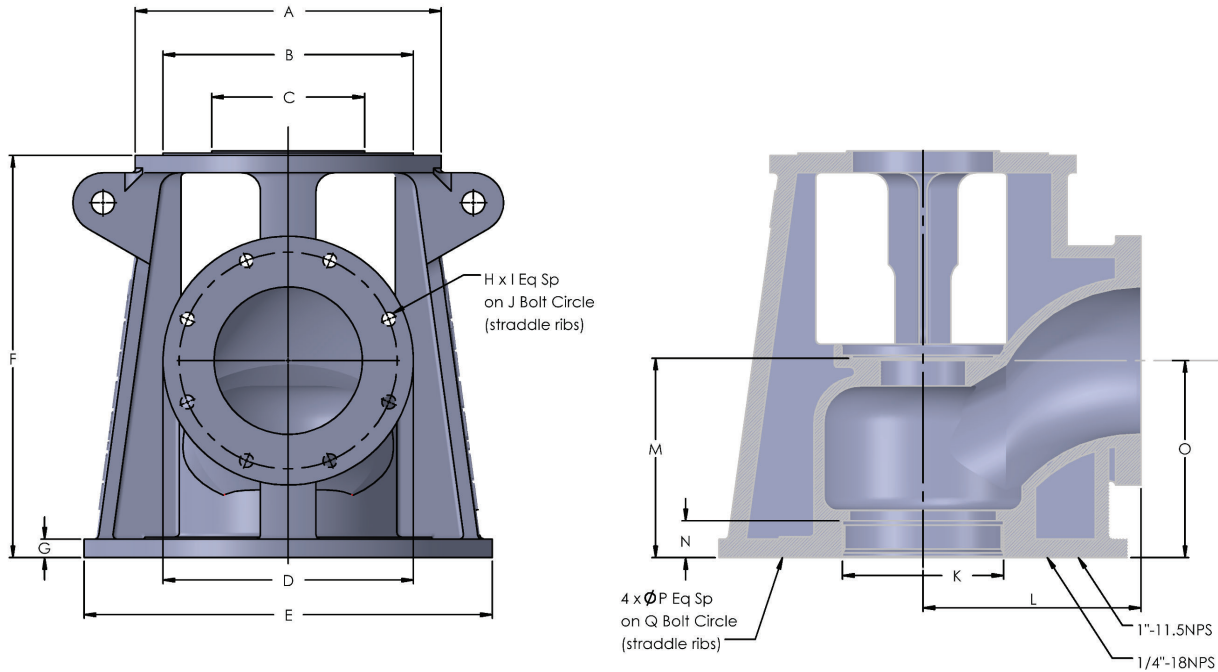




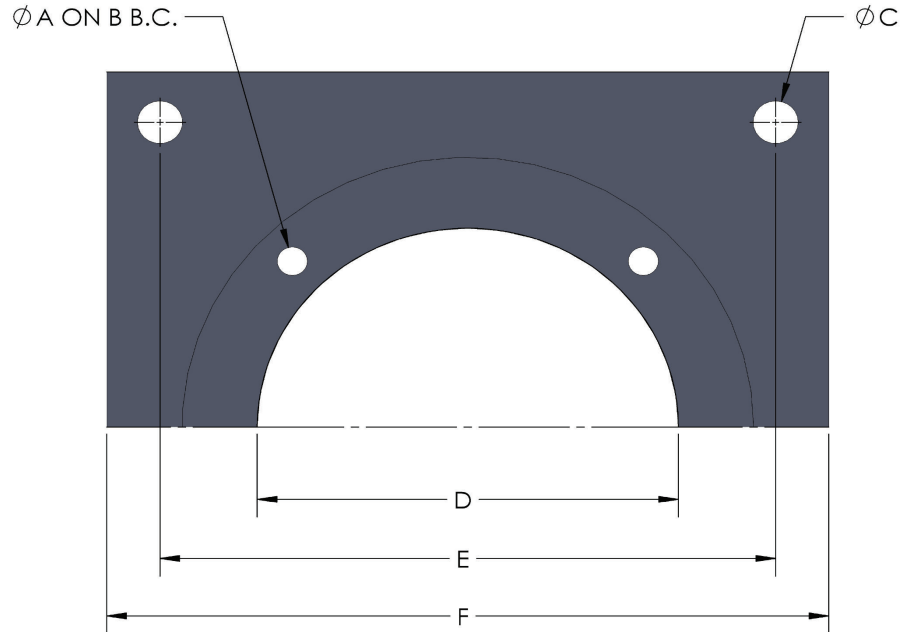
TYPE "A" DISCHARGE HEAD DIMENSIONS



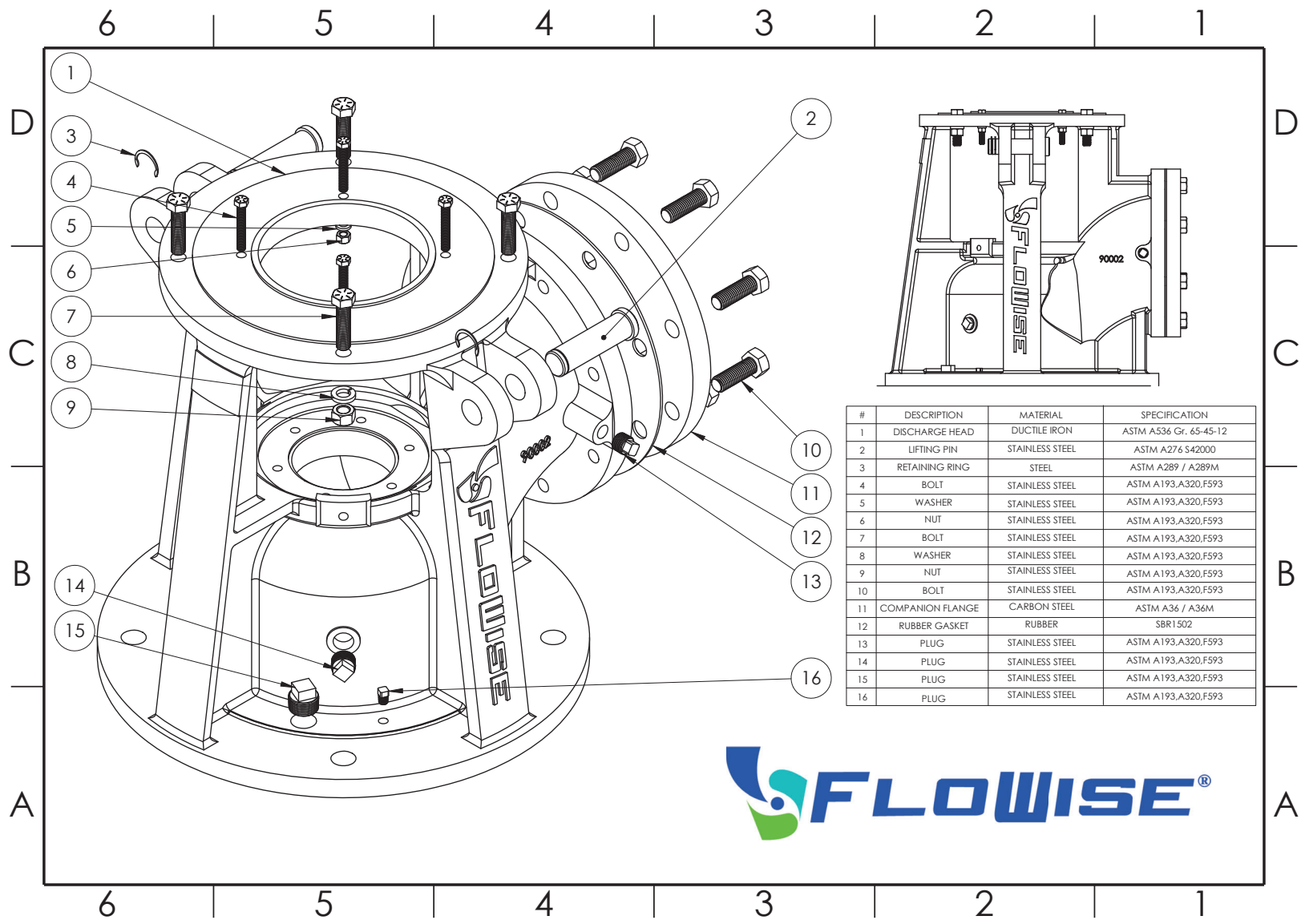
MODEL	MOTOR BD	MAX SHAFT SIZE	DIMENSIONS IN INCHES							
			A	B	C	D	E	F	G	H
TDH-FW4X4X12	12	1.250	12.00	NA	8.24	9.00	17.00	18.41	0.80	8
TDH-FW6X6X12-16	12, 16	1.938	16.50	13.49	8.24	11.00	20.00	20.31	0.90	8
TDH-FW8X8X12-16	12, 16	1.938	16.50	13.49	8.24	13.50	22.00	21.81	1.00	8
TDH-FW10X10X16	16	2.437	16.50	13.49	NA	16.00	23.50	23.44	1.15	12
TDH-FW12X12X16	16	2.437	20.00	13.49	NA	19.00	26.00	24.44	1.30	12

MODEL	DIMENSIONS IN INCHES (CONT.)									WEIGHT
	I	J	K	L	M	N	O	P	Q	
TDH-FW4X4X12	5/8-11UNC	7.50	4	11.75	7.16	1.50	10.69	1	14.25	181
TDH-FW6X6X12-16	3/4-10UNC	9.50	6	11.75	9.06	1.75	10.69	1	17.00	277
TDH-FW8X8X12-16	3/4-10UNC	11.75	8	11.75	10.56	2.00	10.69	1 1/8	18.75	348
TDH-FW10X10X16	7/8-9UNC	14.25	10	11.75	12.19	2.75	10.69	1 1/8	21.25	450
TDH-FW12X12X16	7/8-9UNC	17.00	12	14.75	13.19	2.75	10.69	1 1/4	22.75	635

SOLE PLATE DIMENSIONS



MODEL	DIMENSIONS IN INCHES						PLATE HEIGHT	WEIGHT
	A	B	C	D	E	F		
TDH-FW4X4X12	7/8-9 UNC	14.250	1.250	12.000	22.000	24.000	1.000	85
TDH-FW6X6X12-16	7/8-9 UNC	17.000	1.250	14.500	22.000	24.000	1.000	113
TDH-FW8X8X12-16	1-8 UNC	18.750	1.250	16.500	22.000	24.000	1.000	99
TDH-FW10X10X16	1-8 UNC	21.250	1.250	18.500	24.000	26.000	1.000	114
TDH-FW12X12X16	1-1/8-7 UNC	22.750	1.250	20.500	26.000	28.000	1.250	135



#	DESCRIPTION	MATERIAL	SPECIFICATION
1	DISCHARGE HEAD	DUCTILE IRON	ASTM A536 Gr. 65-45-12
2	LIFTING PIN	STAINLESS STEEL	ASTM A276 S42000
3	RETAINING RING	STEEL	ASTM A289 / A289M
4	BOLT	STAINLESS STEEL	ASTM A193,A320,F593
5	WASHER	STAINLESS STEEL	ASTM A193,A320,F593
6	NUT	STAINLESS STEEL	ASTM A193,A320,F593
7	BOLT	STAINLESS STEEL	ASTM A193,A320,F593
8	WASHER	STAINLESS STEEL	ASTM A193,A320,F593
9	NUT	STAINLESS STEEL	ASTM A193,A320,F593
10	BOLT	STAINLESS STEEL	ASTM A193,A320,F593
11	COMPANION FLANGE	CARBON STEEL	ASTM A36 / A36M
12	RUBBER GASKET	RUBBER	SBR1 502
13	PLUG	STAINLESS STEEL	ASTM A193,A320,F593
14	PLUG	STAINLESS STEEL	ASTM A193,A320,F593
15	PLUG	STAINLESS STEEL	ASTM A193,A320,F593
16	PLUG	STAINLESS STEEL	ASTM A193,A320,F593



6 5 4 3 2 1

D

D

C

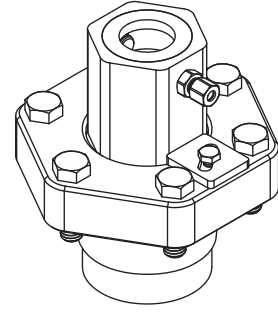
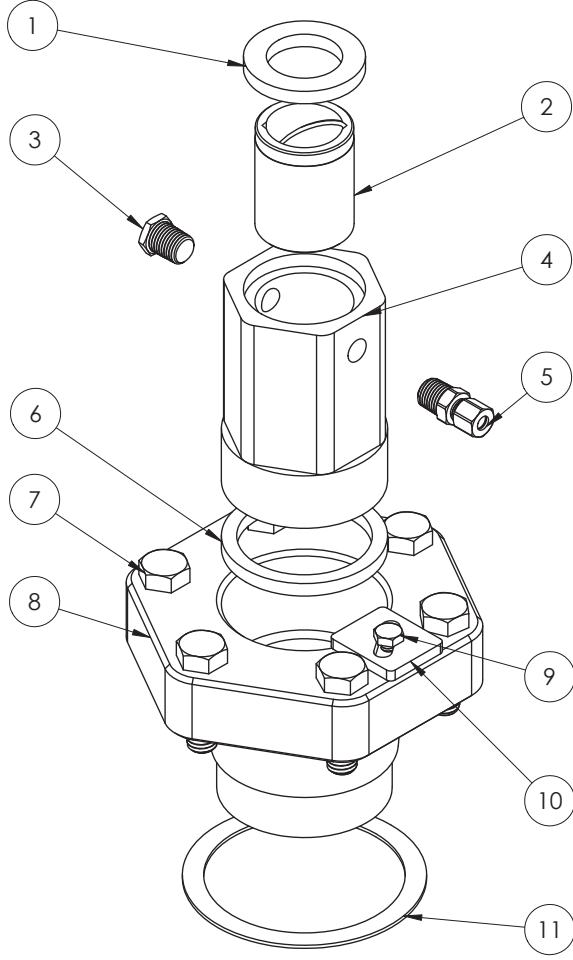
C

B

B

A

A



#	DESCRIPTION	MATERIAL	SPECIFICATION
1	LIP SEAL	Buna-N	
2	BEARING	BRONZE	907LF
3	PLUG	STAINLESS STEEL	ASTM A193,A320,F593
4	STRETCH NUT	STAINLESS STEEL	ASTM A29 1045
5	COMPRESSION FITTING	STEEL	ASTM A193,A320,F593
6	PACKING	GRAPHITE	GRAPHITE FILLED PTFE FIBER
7	BOLT	STAINLESS STEEL	ASTM A193,A320,F593
8	STRETCH HOUSING	DUCTILE IRON	ASTM A536GR. 65-45-12
9	BOLT	STAINLESS STEEL	ASTM A193,A320,F593
10	LOCK PLATE	STEEL	ASTM A29 1045
11	CRUSH RING	COPPER	110 COPPER



6 5 4 3 2 1